

HOME AND LAND

LOT 1, BROSTER ROAD, ANGLE VALE (701M2)

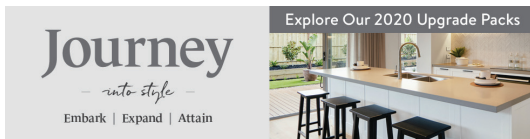
FLOOR PLAN: WINSTON 18M
FRONTAGE
FACADE: ALLANDALE

Images shown are for illustrative purposes only and may not represent the final product such as lighting, window furnishings, timber look garage door & timber windows. Façade details including entry door and window sizing may vary between house types. Pricing also excludes features such as fencing, landscaping, letterbox, decking, driveway and any notable features of the façade. Please speak with your sales consultant for further details.

FROM*
\$476,880

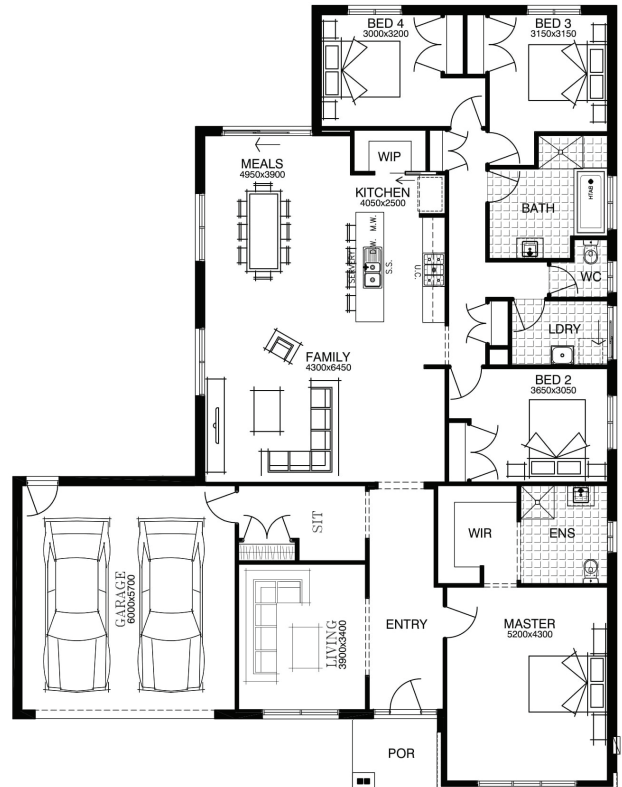
BASED ON LAND SALE \$220,000

4 🚗 2 🍷 2 🚗 2 🛋️ 26sq 📏



PACKAGE INCLUSIONS:

- ▼ GENEROUS SITE & FOOTING COSTS FIXED BEFORE CONTRACT
- ▼ DEVELOPER & COUNCIL REQUIREMENTS
- ▼ RENDER TO FACADE & ATURA PROFILE ROOF TILE
- ▼ QUALITY LAUNDRY & KITCHEN JOINERY WITH O/H CUPBOARDS
- ▼ 20MM CAESARSTONE BENCHTOPS TO KITCHEN, BLINDS THROUGHOUT
- ▼ 3 COAT PAINT SYSTEM, 20 DOWNLIGHTS
- ▼ FULL STORMWATER SYSTEM, NBN READY
- ▼ DUCTED R/C HEATING & COOLING



For enquiries please contact:
Bryn Willcox
0433 870 237
Simonds.com.au

SA
ADELAIDE SA 5000
bryn.willcox@simonds.com.au

