



\$405,000

Fixed Price Turnkey

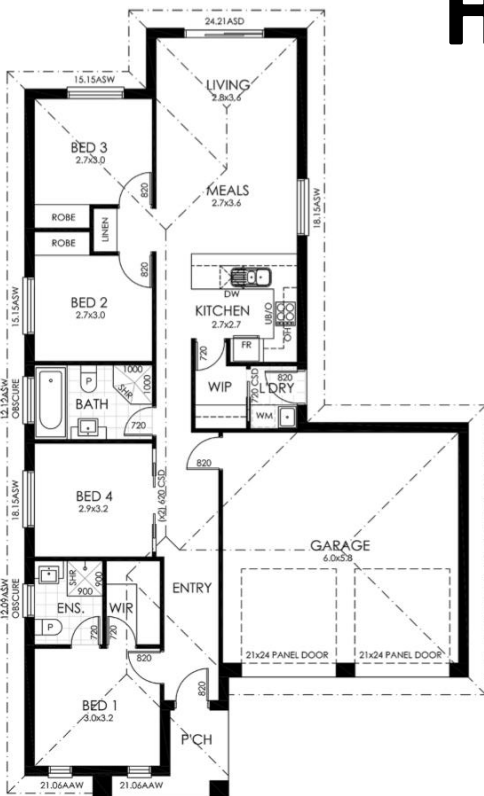
JASPER 155

House & Land Package

Inclusions

- Stainless steel appliances incl dishwasher
- Blinds, TV ant, clothesline, letterbox
- Carpet to bedrooms
- Laminate timber floor to hallways and living
- Ducted reverse cycle heating and cooling
- Downlights throughout
- 2400mm ceilings
- Instantaneous gas HWS
- Front landscaping
- Paved driveway and perimeters
- Robes *
- Automatic garage door opener

*Excludes retaining if required
 *Excludes rear landscaping



Build Size: 155m²
Land Size: 456m² 12.5x36.49
Land component \$166,500 By Developer

Illustrations are an Artists Impression, see working drawings for details and specifications booklet for inclusions. Purchasers will be required to enter into a separate land & build contract.

