

LEGEND

1 SINGLE STOREY SETBACK
 MAXIMUM BUILDING ENVELOPE &
 SETBACK DISTANCES FROM BOUNDARY.
 NOTE: COUNCIL PLANNING SETBACK
 REQUIREMENTS ARE TO BE READ IN
 CONJUNCTION WITH SHOWN DIMENSIONS

1.5 TWO STOREY SETBACK
 MAXIMUM BUILDING ENVELOPE &
 SETBACK DISTANCES FROM BOUNDARY.
 NOTE: COUNCIL PLANNING SETBACK
 REQUIREMENTS ARE TO BE READ IN
 CONJUNCTION WITH SHOWN DIMENSIONS

G NOMINATED GARAGE LOCATION.
 TYPICAL SETBACK 5.50m.
 UNLESS NOTED OTHERWISE

█ DENOTES GARAGE CAN BE
 BUILT ON BOUNDARY

S SEWER CONNECTION

W WATER CONNECTION

C COMMUNICATIONS PIT

FDH FIBRE DISTRIBUTION HUB (NBN Co)

E SAPN PILLAR /
 ELECTRICAL CONNECTION

E SAPN PIT

L SAPN LIGHT POLE

T/F SAPN TRANSFORMER

SW STORMWATER KERB OUTLET

▣ STORMWATER JUNCTION BOX

▣ STORMWATER SIDE ENTRY PIT

▣ STORMWATER HEADWALL

▬ RETAINING WALL/CONCRETE UPSTAND

▬ PRAM RAMP

▬ FOOTPATH

▬ DRIVEWAY CROSSOVER

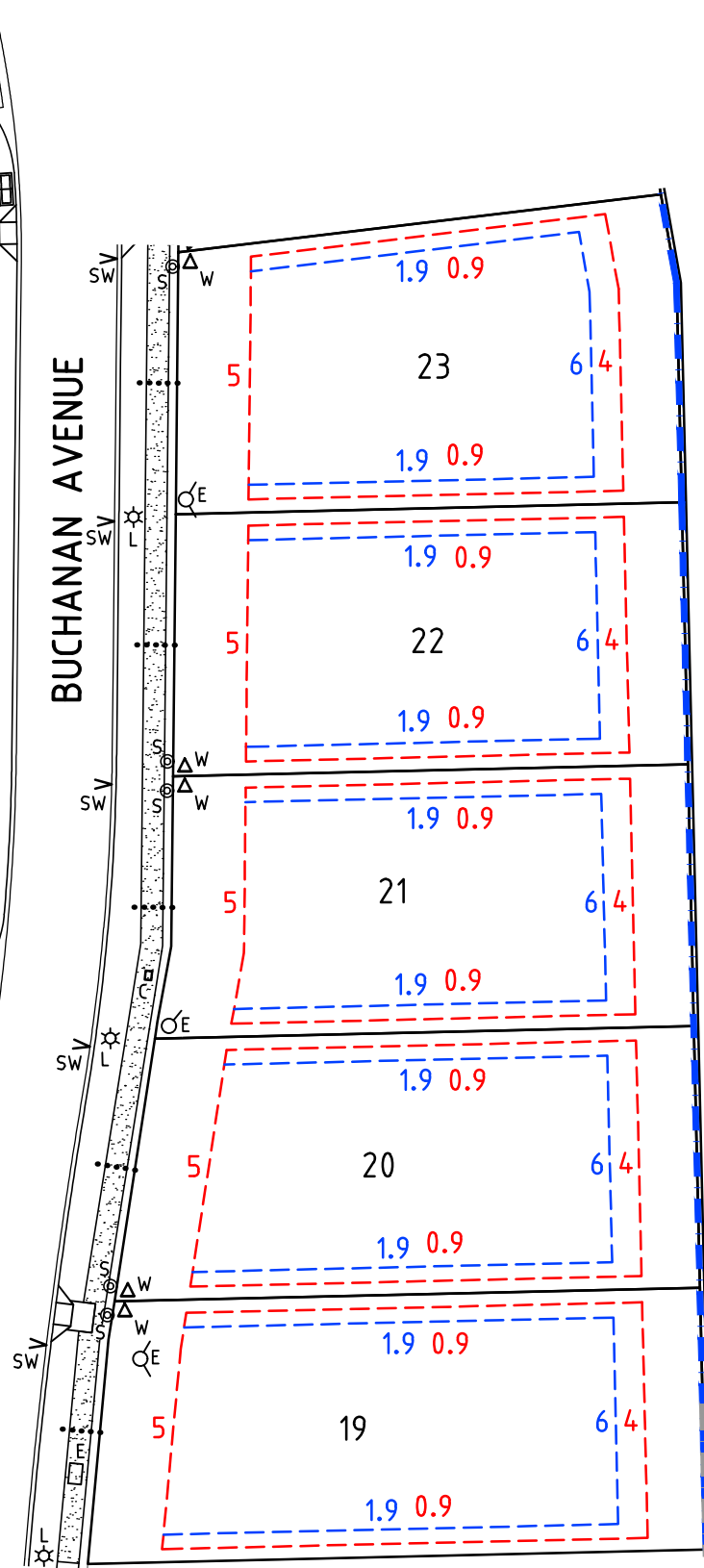
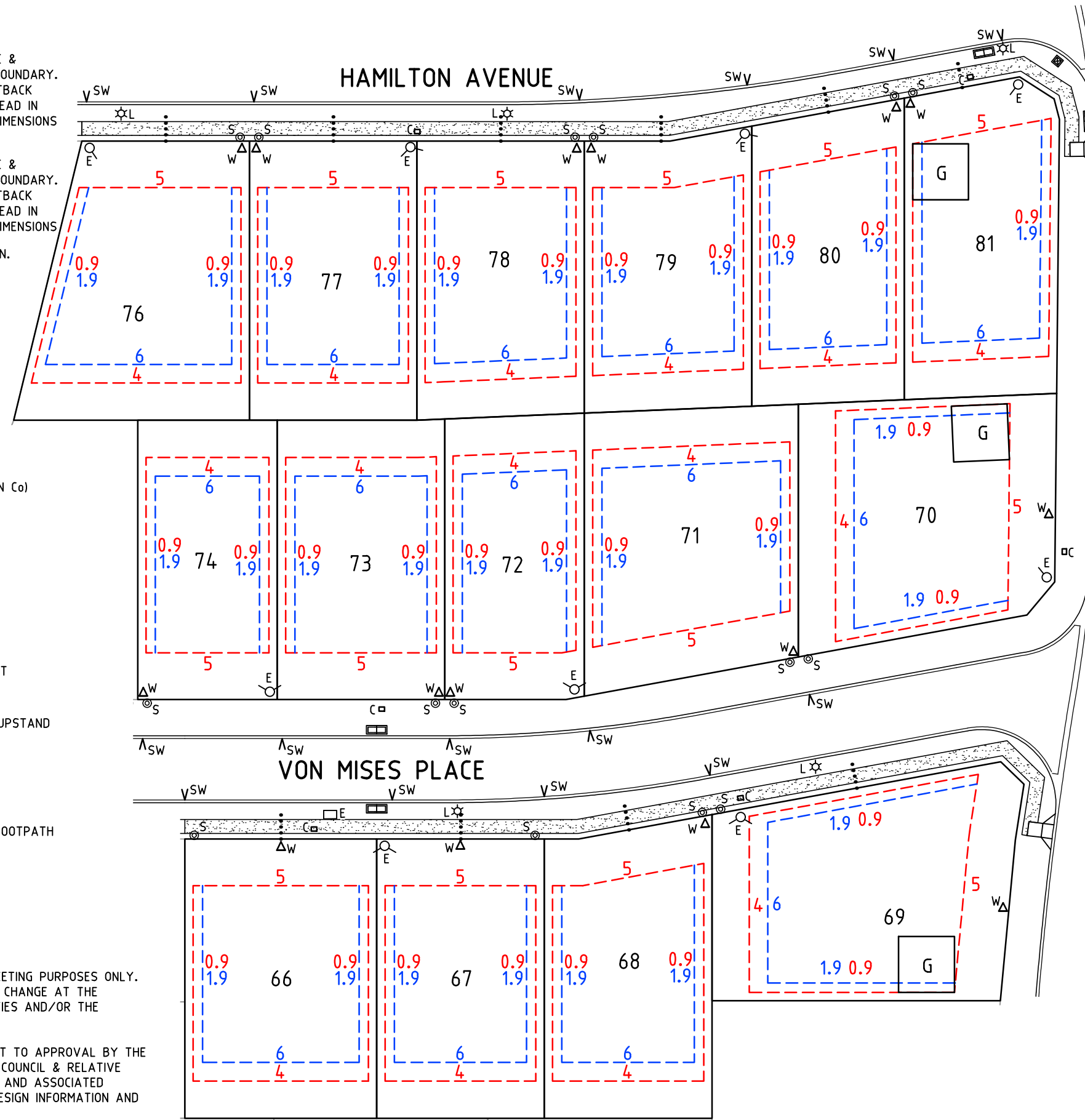
⋯ IRRIGATION CONDUIT UNDER FOOTPATH

~ FENCING SUPPLIED

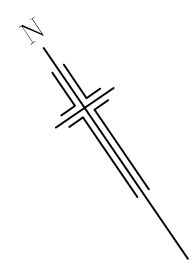
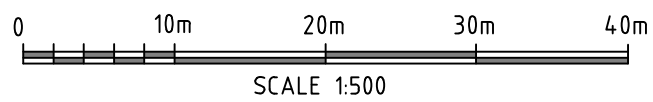
⊙ STREET SIGN

NOTES

- THIS PLAN IS TO BE USED FOR MARKETING PURPOSES ONLY. EASEMENTS SHOWN ARE SUBJECT TO CHANGE AT THE DISCRETION OF STATUTORY AUTHORITIES AND/OR THE DEVELOPER.
- ALL DATA SHOWN HEREON IS SUBJECT TO APPROVAL BY THE REGISTRAR GENERAL'S DEPARTMENT, COUNCIL & RELATIVE SERVICE AUTHORITIES. ROAD LAYOUT AND ASSOCIATED INFRASTRUCTURE IS DERIVED FROM DESIGN INFORMATION AND SUBJECT TO CHANGE.
- ENVELOPES ARE INDICATIVE SHOWING MINIMUM SET BACKS ONLY AT THE TIME OF PREPARATION. COUNCIL AND DEVELOPMENT PLAN REQUIREMENTS MUST ALSO BE ADHERED TO.
- MINIMUM PRIVATE OPEN SPACE AND MAXIMUM SITE COVERAGE PER COUNCIL & DESIGN GUIDELINES APPLY.



SHEET 1 OF 2



TWO WELLS
 STAGE 2B

Liberty

Hickinbotham

Herriot consulting
 civil & structural engineers

LEGEND

SINGLE STOREY SETBACK
 MAXIMUM BUILDING ENVELOPE &
 SETBACK DISTANCES FROM BOUNDARY.
 NOTE: COUNCIL PLANNING SETBACK
 REQUIREMENTS ARE TO BE READ IN
 CONJUNCTION WITH SHOWN DIMENSIONS

TWO STOREY SETBACK
 MAXIMUM BUILDING ENVELOPE &
 SETBACK DISTANCES FROM BOUNDARY.
 NOTE: COUNCIL PLANNING SETBACK
 REQUIREMENTS ARE TO BE READ IN
 CONJUNCTION WITH SHOWN DIMENSIONS

G
 NOMINATED GARAGE LOCATION.
 TYPICAL SETBACK 5.50m.
 UNLESS NOTED OTHERWISE

[Red Line]
 DENOTES GARAGE CAN BE
 BUILT ON BOUNDARY

S SEWER CONNECTION

W WATER CONNECTION

C COMMUNICATIONS PIT

FDH FIBRE DISTRIBUTION HUB (NBN Co)

E SAPN PILLAR /
ELECTRICAL CONNECTION

E SAPN PIT

L SAPN LIGHT POLE

T/F SAPN TRANSFORMER

SW STORMWATER KERB OUTLET

STORMWATER JUNCTION BOX

STORMWATER SIDE ENTRY PIT

STORMWATER HEADWALL

[Blue Dashed Line] RETAINING WALL/CONCRETE UPSTAND

PRAM RAMP

FOOTPATH

DRIVEWAY CROSSOVER

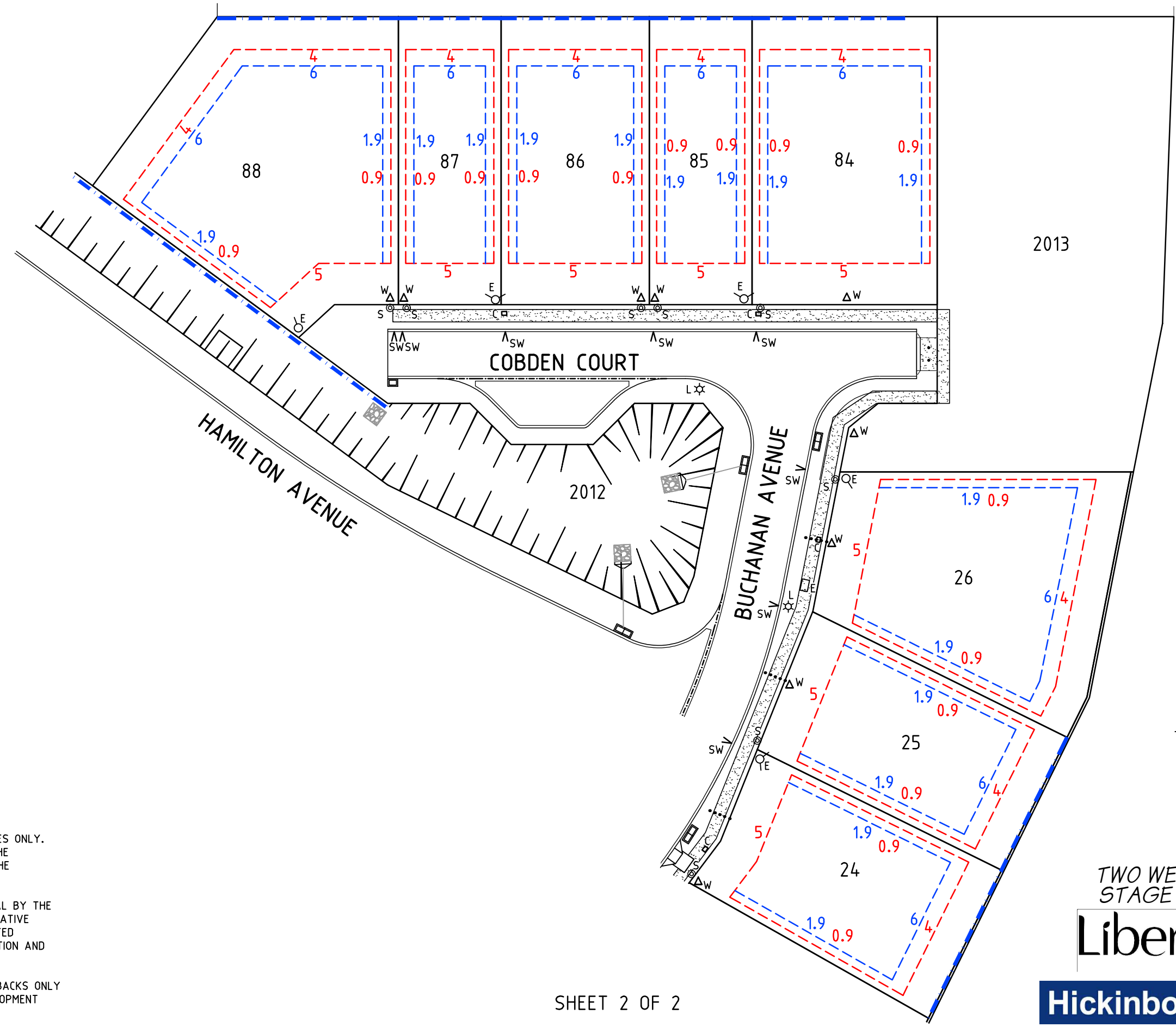
[Dotted Line] IRRIGATION CONDUIT UNDER FOOTPATH

[Wavy Line] FENCING SUPPLIED

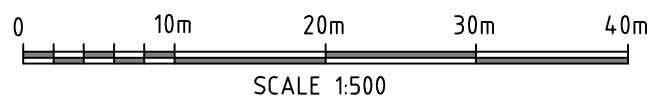
[Circle with T] STREET SIGN

NOTES

- THIS PLAN IS TO BE USED FOR MARKETING PURPOSES ONLY. EASEMENTS SHOWN ARE SUBJECT TO CHANGE AT THE DISCRETION OF STATUTORY AUTHORITIES AND/OR THE DEVELOPER.
- ALL DATA SHOWN HEREON IS SUBJECT TO APPROVAL BY THE REGISTRAR GENERAL'S DEPARTMENT, COUNCIL & RELATIVE SERVICE AUTHORITIES. ROAD LAYOUT AND ASSOCIATED INFRASTRUCTURE IS DERIVED FROM DESIGN INFORMATION AND SUBJECT TO CHANGE.
- ENVELOPES ARE INDICATIVE SHOWING MINIMUM SET BACKS ONLY AT THE TIME OF PREPARATION. COUNCIL AND DEVELOPMENT PLAN REQUIREMENTS MUST ALSO BE ADHERED TO.
- MINIMUM PRIVATE OPEN SPACE AND MAXIMUM SITE COVERAGE PER COUNCIL & DESIGN GUIDELINES APPLY.



SHEET 2 OF 2



TWO WELLS
 STAGE 2B

Liberty

Hickinbotham

Herriot consulting
 civil & structural engineers