



House and land package from \$485,164*

Address: Lot 210 Churches Way, Gawler South

Inclusions:

- + Rumpus
- + Parents Retreat
- + Alfresco Under Main Roof
- + Kitchen Dining , Family opening to Alfresco
- + Double Garage with Panel Lift Door including Remote
- + Activity Room

Springbrook 270 - Express Series

4 2 2

Give us a call or drop in for a chat today.

Office:

Barossa

83-85 Murray St, Gawler SA 5118

BLD275969

Moein Momtahan

New Home Consultant

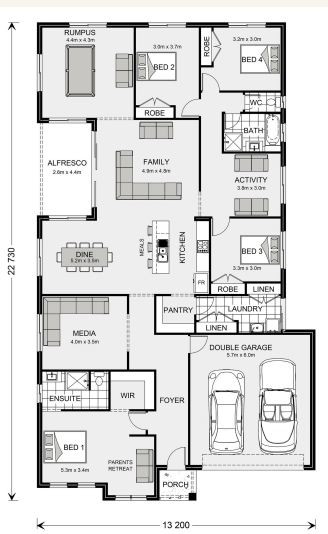
Call: 0418841655

Email: moein.momtahan@gjgardner.com.au

Call: (08) 8100 0770

Email: Mark.Horsburgh@gjgardner.com.au

Or visit gjgardner.com.au



*Images and photographs may depict fixtures, finishes and features either not supplied by G.J. Gardner Homes or not included in any price stated. These items include furniture, swimming pools, pool decks, fences, landscaping - including planter boxes, retaining walls, water features, pergolas, screens and decorative landscaping items such as fencing and outdoor kitchens and barbeques. For detailed home pricing, please talk to a new homes consultant.

Welcome **home.**

G.J. Gardner. HOMES