



# HOME AND LAND

Images shown are for illustrative purposes only and may not represent the final product such as lighting, window furnishings, timber look garage door & timber windows. Façade details including entry door and window sizing may vary between house types. Pricing also excludes features such as fencing, landscaping, letterbox, decking, driveway and any notable features of the façade. Please speak with your sales consultant for further details.

LOT 213, HESELTINE CIRCUIT, GAWLER SOUTH (750M2)

FLOOR PLAN: BOLTON 3016  
FACADE: KEW

FROM\*  
**\$507,892**

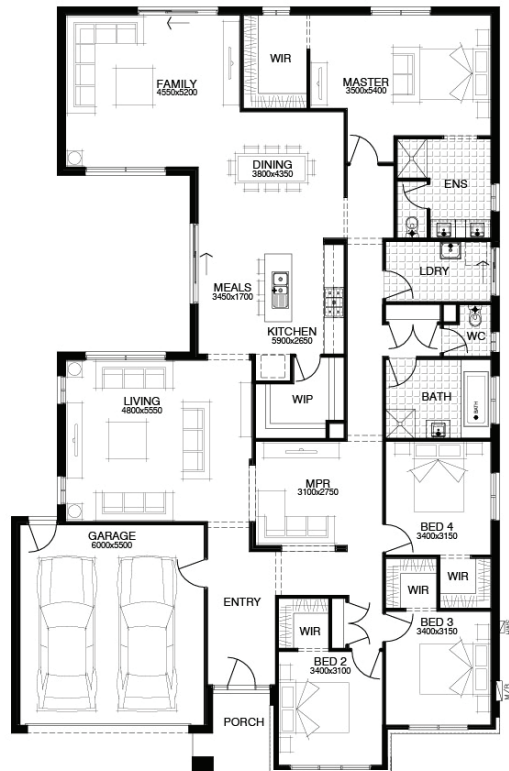
BASED ON LAND SALE OF \$222,000

4 🚗 2 🍷 2 🚗 3 🛋️ 30sq 📏

**BIRTHDAY BONUS\***  
**\$19k** of options for \$0

## PACKAGE INCLUSIONS:

- ▼ GENEROUS SITE & FOOTING COSTS FIXED BEFORE CONTRACT
- ▼ DEVELOPER & COUNCIL REQUIREMENTS
- ▼ QUALITY LAUNDRY & KITCHEN JOINERY WITH O/H CUPBOARDS
- ▼ PANEL LIFT GARAGE DOOR & REMOTE
- ▼ 3 COAT PAINT SYSTEM, NBN READY
- ▼ FULL STORMWATER SYSTEM
- ▼ DUCTED R/C HEATING & COOLING
- ▼ + 20MM CAESARSTONE BENCHTOPS & HIGH CEILINGS
- ▼ LIFETIME STRUCTURAL GUARANTEE



For enquiries please contact:  
Bryn Willcox  
0433 870 237  
Simonds.com.au

SA  
ADELAIDE SA 5000  
bryn.willcox@simonds.com.au

**WOODVALE**  
HILLS OF GAWLER