



HOME AND LAND

Images shown are for illustrative purposes only and may not represent the final product such as lighting, window furnishings, timber look garage door & timber windows. Façade details including entry door and window sizing may vary between house types. Pricing also excludes features such as fencing, landscaping, letterbox, decking, driveway and any notable features of the façade. Please speak with your sales consultant for further details.

LOT 212, HESELTINE CIRCUIT, GAWLER SOUTH (810M2)

FLOOR PLAN: RIO 2614
FACADE: BRIGHTON

FROM*
\$499,397

BASED ON LAND SALE OF \$235,000

4 🚗 2 🍷 2 🚗 2 🚗 26sq 📏

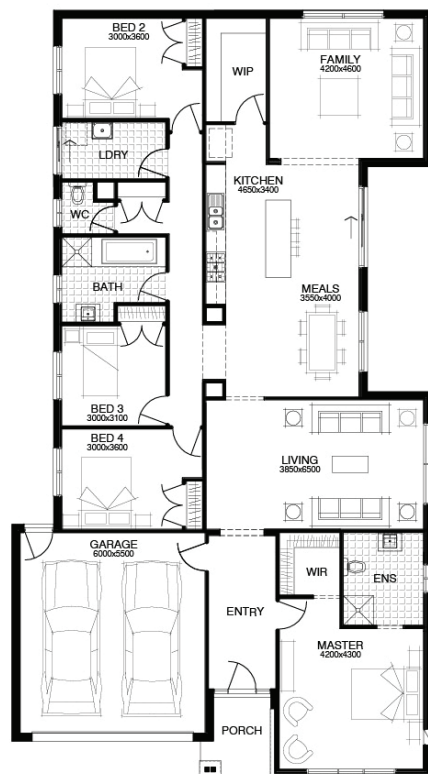
Select \$20k of upgrades

Good One, Gary!



PACKAGE INCLUSIONS:

- ▼ GENEROUS SITE & FOOTING COSTS FIXED BEFORE CONTRACT
- ▼ DEVELOPER & COUNCIL REQUIREMENTS
- ▼ QUALITY LAUNDRY & KITCHEN JOINERY WITH O/H CUPBOARDS
- ▼ PANEL LIFT GARAGE DOOR & REMOTE
- ▼ 3 COAT PAINT SYSTEM, NBN READY
- ▼ QUALITY FIXTURES & FITTINGS
- ▼ FULL STORMWATER SYSTEM
- ▼ DUCTED R/C HEATING & COOLING
- ▼ + \$20K TO SPEND ON UPGRADES
- ▼ LIFETIME STRUCTURAL GUARANTEE



For enquiries please contact:

Bryn Willcox
0433 870 237
Simonds.com.au

SA

ADELAIDE SA 5000
bryn.willcox@simonds.com.au

WOODVALE
HILLS OF GAWLER