



HOME AND LAND

LOT 27, LUIS DRIVE, ANGLE VALE (540M2)

Images shown are for illustrative purposes only and may not represent the final product such as lighting, window furnishings, timber look garage door & timber windows. Façade details including entry door and window sizing may vary between house types. Pricing also excludes features such as fencing, landscaping, letterbox, decking, driveway and any notable features of the façade. Please speak with your sales consultant for further details.

FLOOR PLAN: PALISADE 16M FRONTAGE
FACADE: ALLANDALE

FROM*
\$435,537

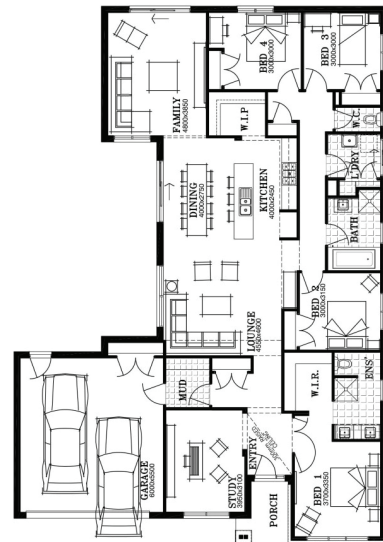
BASED ON LAND SALE OF \$179,950

4 🚗 2 🍷 2 🚗 3 🚗 25sq 📏

THE CHOICE IS YOURS!
EXCLUSIVE UPGRADES

PACKAGE INCLUSIONS:

- ▼ GENEROUS SITE & FOOTING COSTS FIXED BEFORE CONTRACT
- ▼ DEVELOPER & COUNCIL REQUIREMENTS
- ▼ QUALITY LAUNDRY & KITCHEN JOINERY WITH O/H CUPBOARDS
- ▼ PANEL LIFT GARAGE DOOR & REMOTE
- ▼ 3 COAT PAINT SYSTEM, NBN READY
- ▼ QUALITY FIXTURES & FITTINGS
- ▼ FULL STORMWATER SYSTEM
- ▼ DUCTED R/C HEATING & COOLING
- ▼ + \$20K TO SPEND ON UPGRADES
- ▼ LIFETIME STRUCTURAL GUARANTEE



For enquiries please contact:
Janelle Gill
0408 898 027
Simonds.com.au

SA
ADELAIDE SA 5000
janelle.gill@simonds.com.au

