



## House and land package from \$633,055\*

Address: 3 New Street (Banksia Mews), Banksia Park, Century 21 Special Projects (SA) RLA 2140

### Inclusions:

- + Carpet to Upper Floor and Staircase
- + Laminate to Lower Floor
- + Reverse Cycle air-conditioning (Heating and Cooling)
- + Stone bench-tops to kitchen
- + 900mm Appliances
- + Element lighting package, incl. downlights

## Nelson Bay 264 B1F - Metro Series

4 2 2

**Give us a call or drop in for a chat today.**

### Office:

Adelaide North East  
Shop 2 560 North East Road, Holden Hill SA 5088  
BLD290274

**Etienne Lemmetjies**

Sales Consultant

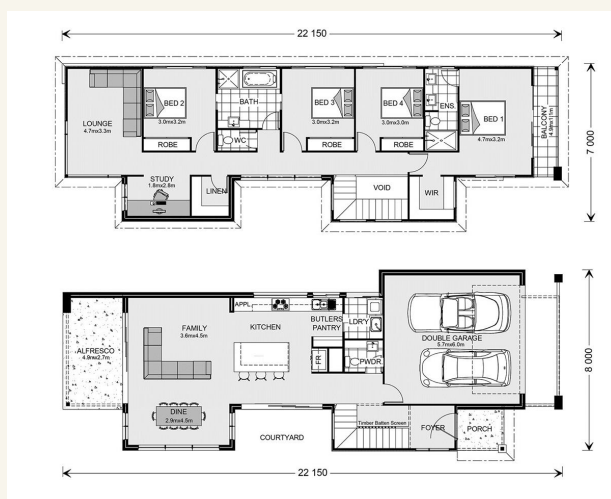
Call: 0410710697

Email: [etienne.lemmetjies@gjgardner.com.au](mailto:etienne.lemmetjies@gjgardner.com.au)

Call: 132 789

Email: [daniel.williams@gjgardner.com.au](mailto:daniel.williams@gjgardner.com.au)

Or visit [gjgardner.com.au](http://gjgardner.com.au)



\*Images and photographs may depict fixtures, finishes and features either not supplied by G.J. Gardner Homes or not included in any price stated. These items include furniture, swimming pools, pool decks, fences, landscaping - including planter boxes, retaining walls, water features, pergolas, screens and decorative landscaping items such as fencing and outdoor kitchens and barbeques. For detailed home pricing, please talk to a new homes consultant.

Welcome **home.**

**G.J. Gardner.** HOMES