




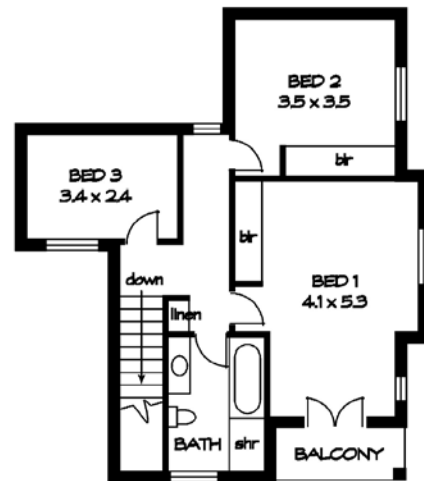
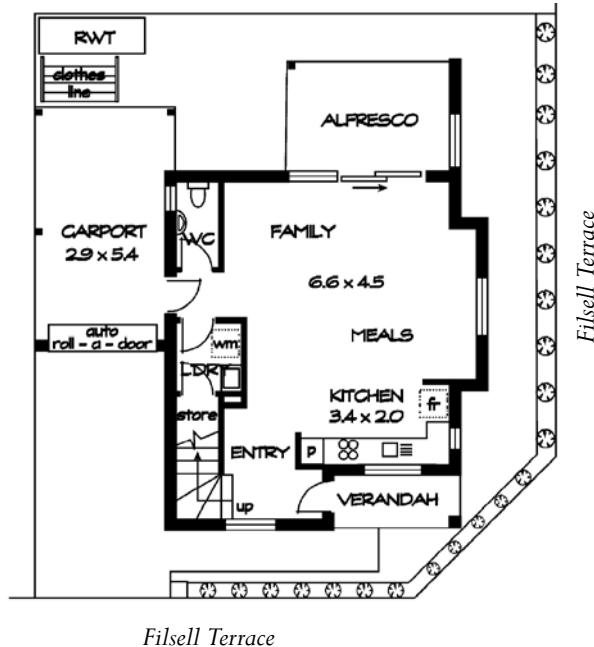
\$335,950*



-  3
-  1
-  1
-  1

LOT 702 FILSELL TERRACE

GROUND FLOOR



FIRST FLOOR

| Areas (approx) | m ² |
|----------------|----------------|
| GF Living | 51.00 |
| FF Living | 64.24 |
| Carport | 18.20 |
| Verandah | 3.37 |
| Balcony | 5.56 |
| Alfresco | 9.78 |
| TOTAL | 148.15 |

WOODVALE
HILLS OF GAWLER

Century 21 (RLA: 2140)
2/1568 Main North Road
Salisbury South SA 5106

Phone: 0432 340 533
E: sales@woodvaleland.com.au



GASPARIN HOMES
— SINCE 1970

Photographs, illustrations and plans in this brochure are for illustrative purposes and should be used as a guide only. Woodvale gives not warranty and makes no representation as to the accuracy or sufficiency of any description, photograph or statement contained in this brochure and accept no liability for any loss for which may be suffered by any person who relies wholly or in part upon the information presented. All information including package prices are subject to change without notice. December 2018. House images and floor plans are © Gasparin Homes Pty Ltd.