



**WOODVALE, GAWLER SOUTH**  
**Lot 33 Squires Place,**

**BRADFORD**  
 HOMES

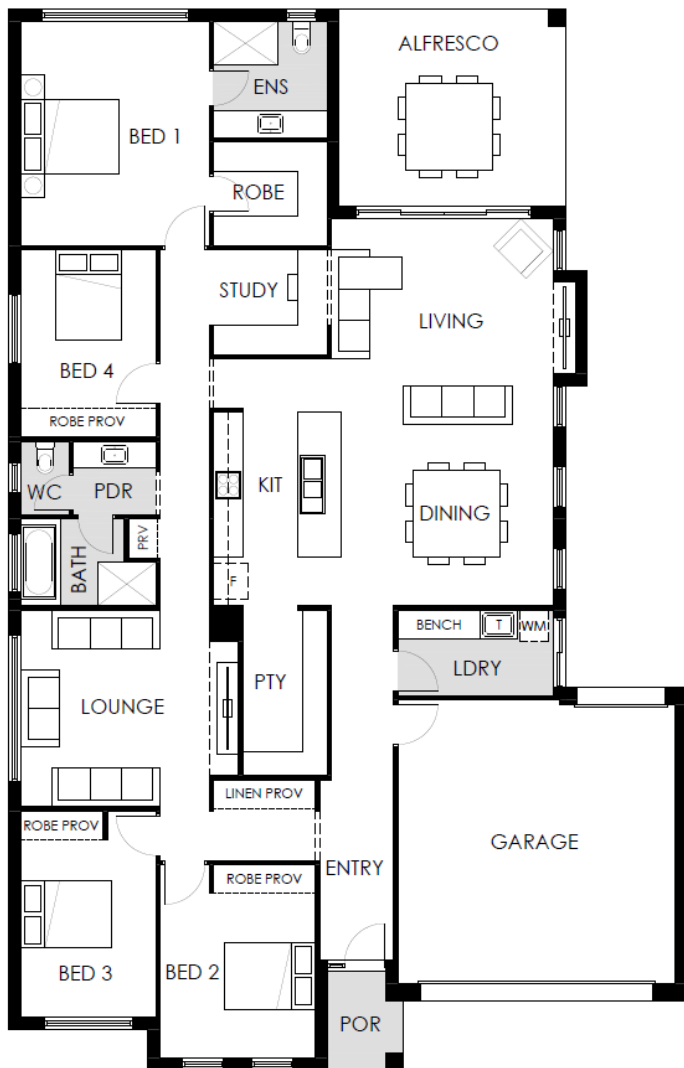


Land \$159,000



**House & Land Package**

**\$459,593**



## Package Inclusions

*Construction by Bradford Homes, a division of the Scott Salisbury Group.*

- Inclusions as per the 'Aspire Collection'
- JAG kitchen
- 2.7m high ceilings throughout
- Ducted reverse cycle air-conditioning
- Generous site works & footings allowance
- Floor coverings
- Robes to all bedrooms

Alternatively, we can customise this package to suit.

Land size: 542m<sup>2</sup> | House area: 262.6m<sup>2</sup>

**Kym Amos**  
 Bradford Homes Sales Consultant  
 M: 0433 455 414  
 E: [kym.amos@bradfordhomes.com.au](mailto:kym.amos@bradfordhomes.com.au)