



# WOODVALE, GALWER SOUTH

Lot 16 Filsell Terrace,

**BRADFORD**  
HOMES

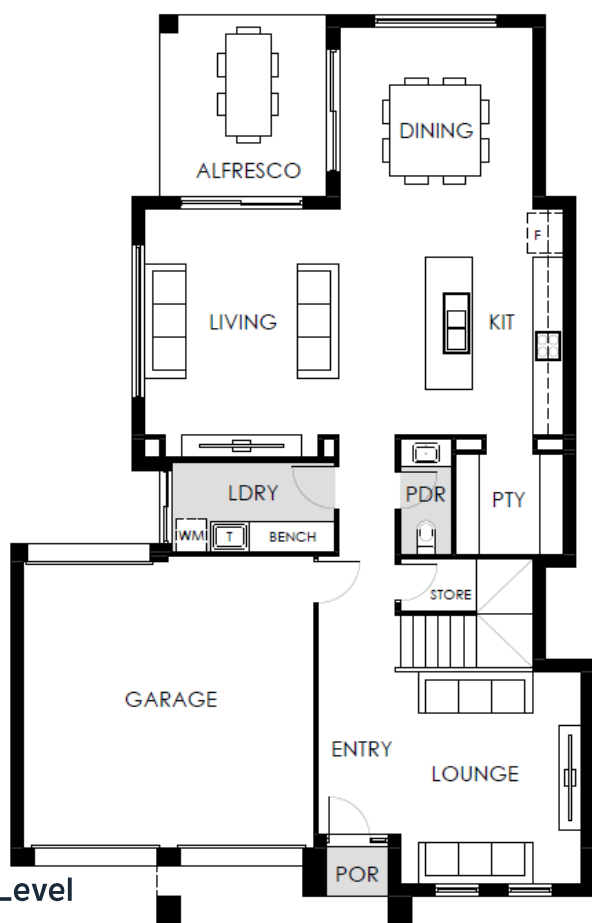


4   2   2

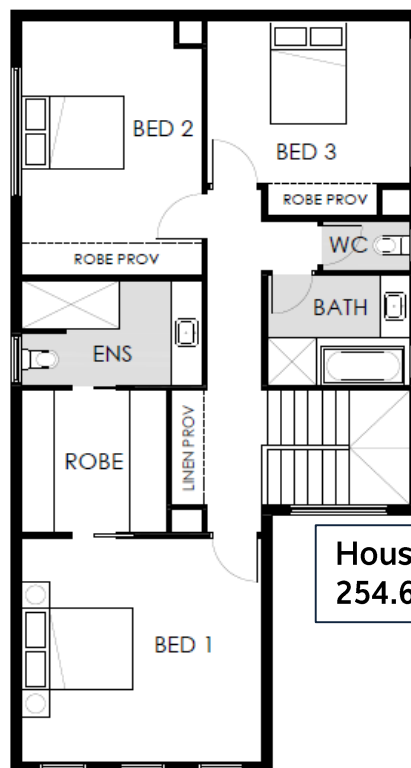
**House & Land Package**

**\$494,788**

Land \$135,000



Lower Level



Upper Level

**House area:  
254.6m<sup>2</sup>**

**Kym Amos | Bradford Homes Consultant**

M: 0433 455 414

E: [kym.amos@bradfordhomes.com.au](mailto:kym.amos@bradfordhomes.com.au)



BRADFORD  
HOMES

WOODVALE, GALWER SOUTH  
Lot 16 Filsell Terrace,



 3  2  2 **House & Land Package** **\$494,788**

## Package Inclusions

*Construction by Bradford Homes, a division of the Scott Salisbury Group.*

- Inclusions as per the 'Aspire Collection'
- JAG kitchen
- 2.7m high ceilings throughout
- Ducted reverse cycle air-conditioning
- Generous site works & footings allowance
- Floor coverings
- Robes to all bedrooms

Alternatively, we can customise this package to suit.

Land component sale by CENTURY 21 Speciall Projects (SA) RLA 2140 Refer website for T&C's.

**Kym Amos | Bradford Homes Consultant**  
M: 0433 455 414  
E: [kym.amos@bradfordhomes.com.au](mailto:kym.amos@bradfordhomes.com.au)