

**HOUSE & LAND PACKAGE**



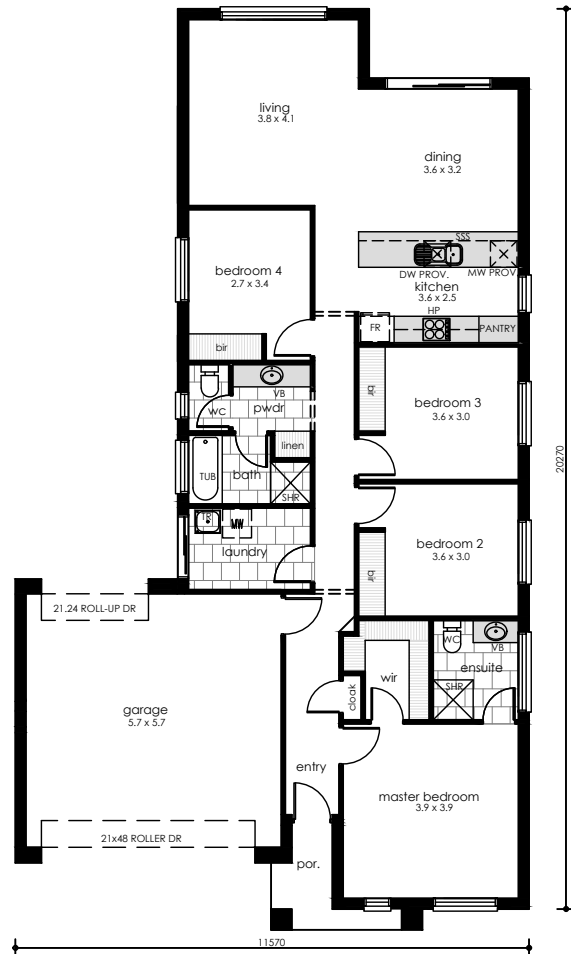
**LOT 14 CLOVE COURT**  
M T B A R K E R | 412m<sup>2</sup> 12.51m |

**T H E A S C O T**  
177.5 m<sup>2</sup> |  4 |  2 |  2

**\$380,940**

**PACKAGE INCLUSIONS**

- UPGRADED MODERN FACADE OR EQUIVALENT
- DUCTED HEATING & COOLING
- STAINLESS STEEL KITCHEN APPLIANCES
- 2.7M CEILING HEIGHT
- DOUBLE GARAGE
- FULL STORM WATER
- PERIMETER & DRIVEWAY PAVING
- CHROME & CERAMIC FINISHES TO SANITARY WARE
- TIMBER LOOK LAMINATE FLOORS TO MAIN LIVING AREAS AND CARPET TO BEDROOMS
- ROBES TO BEDROOMS
- COLOURBOND STEEL ROOF



CALL **BRIAN BELLINGER** FOR MORE INFORMATION  
P 0412 833 147 E [brian.bellinger@metroprop.com.au](mailto:brian.bellinger@metroprop.com.au)

**OUR PASSION | YOUR DREAM**