

**HOUSE & LAND PACKAGE**



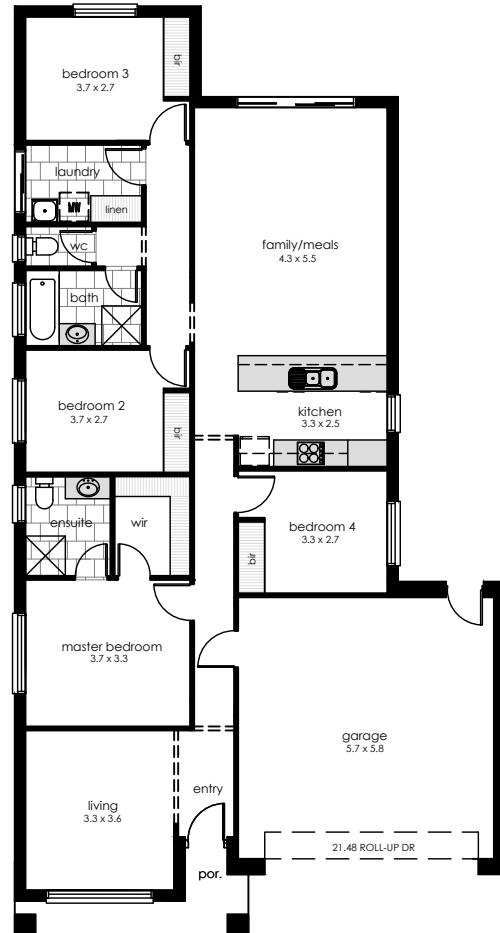
**LOT 13 CLOVE COURT**  
**MT BARKER** | 424m<sup>2</sup> 12.5m |

**THE BAUMONT**  
182.5 m<sup>2</sup> |  4 |  2 |  2

**\$385,940**

**PACKAGE INCLUSIONS**

- UPGRADED MODERN FACADE OR EQUIVALENT
- STAINLESS STEEL KITCHEN APPLIANCES
- 2.7M CEILING HEIGHT
- DOUBLE GARAGE
- FULL STORM WATER
- PERIMETER & DRIVEWAY PAVING
- CHROME & CERAMIC FINISHES TO SANITARY WARE
- TIMBER LOOK LAMINATE FLOORS TO MAIN LIVING AREAS AND CARPET TO BEDROOMS
- ROBES TO BEDROOMS
- COLOURBOND STEEL ROOF



CALL **DAVID BELLINGER** FOR MORE INFORMATION  
P 0412 835 604 E david.bellinger@metroprop.com.au

**OUR PASSION | YOUR DREAM**