



# HOME AND LAND

Images shown are for illustrative purposes only and may not represent the final product such as lighting, window furnishings, timber look garage door & timber windows. Façade details including entry door and window sizing may vary between house types. Pricing also excludes features such as fencing, landscaping, letterbox, decking, driveway and any notable features of the façade. Please speak with your sales consultant for further details.

LOT 57, OGILVY ROAD, GAWLER EAST (576M2)

FLOOR PLAN: PALISADE 16M  
FRONTAGE  
FACADE: MOSSMAN

**FIXED PRICE**

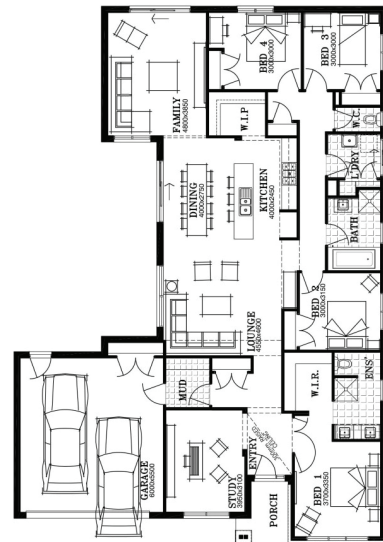
**\$471,993**

4 🚗 2 🍷 2 🚗 3 🚗 25sq 📏



## PACKAGE INCLUSIONS:

- ▼ FIXED SITE AND FOOTING COSTS!
- ▼ DEVELOPER & COUNCIL REQUIREMENTS
- ▼ RENDER TO FACADE, EXTERNAL LIGHTS
- ▼ UPGRADED BRICKS, FLAT ROOF TILES
- ▼ QUALITY LAUNDRY & KITCHEN JOINERY
- ▼ TIMBER FINISH FLOATING FLOOR & CARPET THROUGHOUT
- ▼ LED DOWNLIGHTS, NBN READY
- ▼ FULL STORMWATER SYSTEM
- ▼ DUCTED R/C HEATING & COOLING
- ▼ BASED ON LAND SALE OF \$205,000



**For enquiries please contact:**  
Dallas Pitt  
0403 006 714  
[Simonds.com.au](http://Simonds.com.au)

SA  
ADELAIDE SA 5000  
[dallas.pitt@simonds.com.au](mailto:dallas.pitt@simonds.com.au)

