

LEGEND

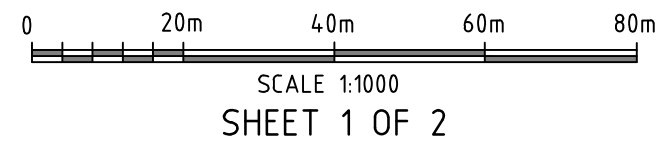
- 1 1
4 **SINGLE STOREY SETBACK**
MAXIMUM BUILDING ENVELOPE & SETBACK DISTANCES FROM BOUNDARY. NOTE: COUNCIL PLANNING SETBACK REQUIREMENTS ARE TO BE READ IN CONJUNCTION WITH SHOWN DIMENSIONS.
- 1.5 2
6 **TWO STOREY SETBACK**
MAXIMUM BUILDING ENVELOPE & SETBACK DISTANCES FROM BOUNDARY. NOTE: COUNCIL PLANNING SETBACK REQUIREMENTS ARE TO BE READ IN CONJUNCTION WITH SHOWN DIMENSIONS.
- 5 5
20 **OUTBUILDING SETBACK**
MAXIMUM BUILDING ENVELOPE & SETBACK DISTANCES FROM BOUNDARY. NOTE: COUNCIL PLANNING SETBACK REQUIREMENTS ARE TO BE READ IN CONJUNCTION WITH SHOWN DIMENSIONS.
- S ⊙ SEWER CONNECTION
- W Δ WATER CONNECTION
- E ⊙ SA POWER NETWORKS PILLAR / ELECTRICAL CONNECTION
- L ⊙ SA POWER NETWORKS LIGHT POLE
- T/F SA POWER NETWORKS TRANSFORMER LOCATION
- SW ⊠ FRONT OF ALLOTMENT STORMWATER CONNECTION
- SW ^ STORMWATER KERB OUTLET
- STORMWATER JUNCTION BOX
- ▤ STORMWATER SIDE ENTRY PIT
- ▴ PRAM RAMP
- ▨ FOOTPATH
- COMMUNICATIONS PIT
- ~ FENCING SUPPLIED

STAGE 1



NOTES

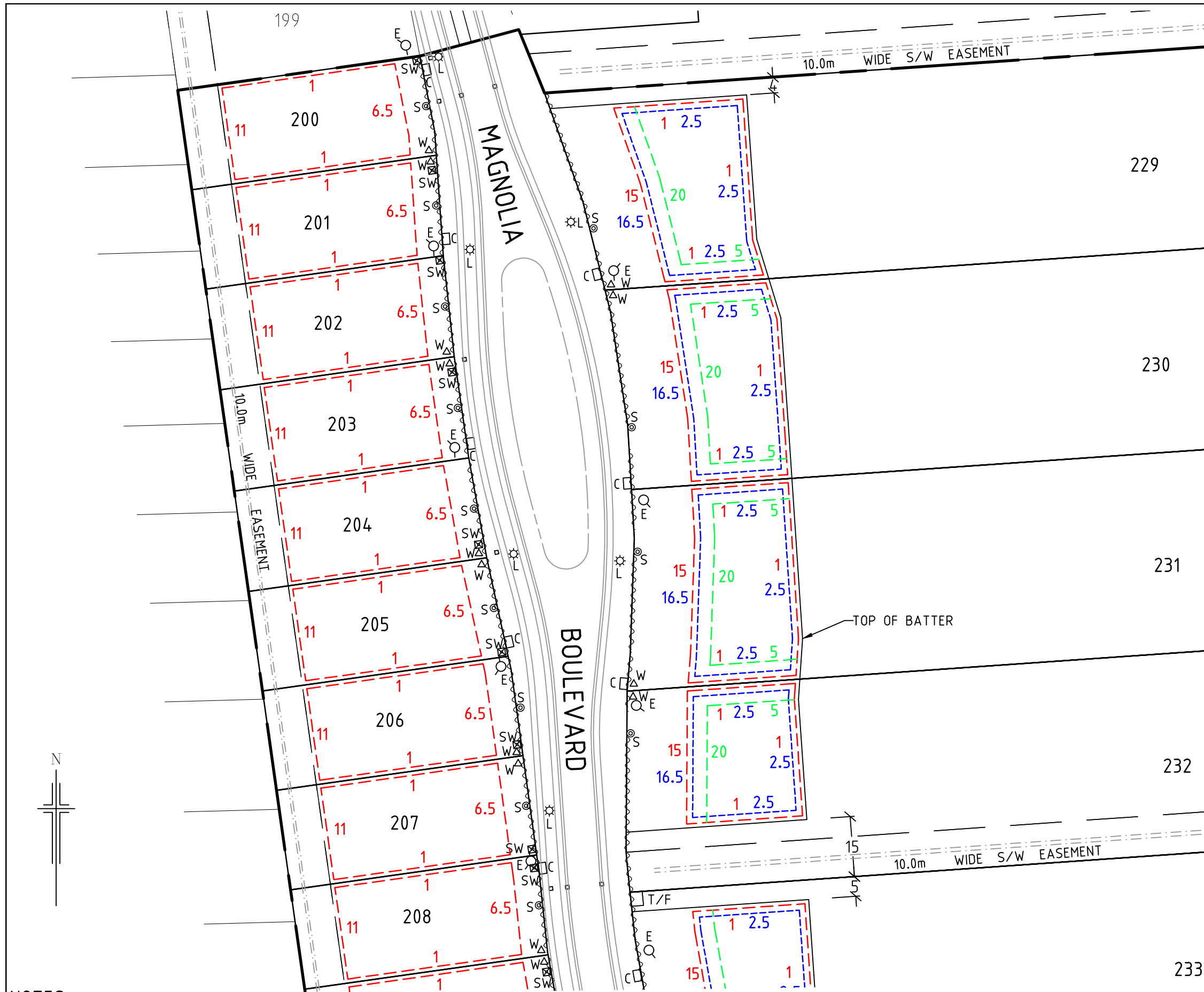
- THIS PLAN IS TO BE USED FOR MARKETING PURPOSES ONLY. EASEMENTS SHOWN ARE SUBJECT TO CHANGE AT THE DISCRETION OF STATUTORY AUTHORITIES AND/OR THE DEVELOPER.
- ALL DATA SHOWN HEREON IS SUBJECT TO APPROVAL BY THE REGISTRAR GENERAL'S DEPARTMENT, COUNCIL & RELATIVE SERVICE AUTHORITIES. ROAD LAYOUT AND ASSOCIATED INFRASTRUCTURE IS DERIVED FROM DESIGN INFORMATION AND SUBJECT TO CHANGE.
- ENVELOPES ARE INDICATIVE SHOWING MINIMUM SET BACKS ONLY AT THE TIME OF PREPARATION. COUNCIL AND DEVELOPMENT PLAN REQUIREMENTS MUST ALSO BE ADHERED TO.
- MINIMUM PRIVATE OPEN SPACE AND MAXIMUM SITE COVERAGE PER COUNCIL & DESIGN GUIDELINES APPLY.



Herriot consulting
civil & structural engineers

1/154 Fullarton Road Rose Park SA 5067
P: 08 8431 4555 E: admin@herriot.com.au W: herriot.com.au

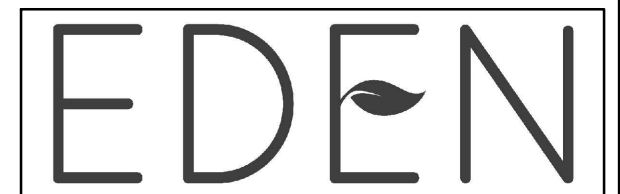
PUBLISHED 17.07.2018



LEGEND

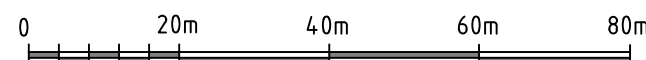
- SINGLE STOREY SETBACK**
 MAXIMUM BUILDING ENVELOPE & SETBACK DISTANCES FROM BOUNDARY. NOTE: COUNCIL PLANNING SETBACK REQUIREMENTS ARE TO BE READ IN CONJUNCTION WITH SHOWN DIMENSIONS.
- TWO STOREY SETBACK**
 MAXIMUM BUILDING ENVELOPE & SETBACK DISTANCES FROM BOUNDARY. NOTE: COUNCIL PLANNING SETBACK REQUIREMENTS ARE TO BE READ IN CONJUNCTION WITH SHOWN DIMENSIONS.
- OUTBUILDING SETBACK**
 MAXIMUM BUILDING ENVELOPE & SETBACK DISTANCES FROM BOUNDARY. NOTE: COUNCIL PLANNING SETBACK REQUIREMENTS ARE TO BE READ IN CONJUNCTION WITH SHOWN DIMENSIONS.
- SEWER CONNECTION
- WATER CONNECTION
- SA POWER NETWORKS PILLAR / ELECTRICAL CONNECTION
- SA POWER NETWORKS LIGHT POLE
- SA POWER NETWORKS TRANSFORMER LOCATION
- FRONT OF ALLOTMENT STORMWATER CONNECTION
- STORMWATER KERB OUTLET
- STORMWATER JUNCTION BOX
- STORMWATER SIDE ENTRY PIT
- PRAM RAMP
- FOOTPATH
- COMMUNICATIONS PIT
- FENCING SUPPLIED

STAGE 1



NOTES

- THIS PLAN IS TO BE USED FOR MARKETING PURPOSES ONLY. EASEMENTS SHOWN ARE SUBJECT TO CHANGE AT THE DISCRETION OF STATUTORY AUTHORITIES AND/OR THE DEVELOPER.
- ALL DATA SHOWN HEREON IS SUBJECT TO APPROVAL BY THE REGISTRAR GENERAL'S DEPARTMENT, COUNCIL & RELATIVE SERVICE AUTHORITIES. ROAD LAYOUT AND ASSOCIATED INFRASTRUCTURE IS DERIVED FROM DESIGN INFORMATION AND SUBJECT TO CHANGE.
- ENVELOPES ARE INDICATIVE SHOWING MINIMUM SET BACKS ONLY AT THE TIME OF PREPARATION. COUNCIL AND DEVELOPMENT PLAN REQUIREMENTS MUST ALSO BE ADHERED TO.
- MINIMUM PRIVATE OPEN SPACE AND MAXIMUM SITE COVERAGE PER COUNCIL & DESIGN GUIDELINES APPLY.



SCALE 1:1000
SHEET 2 OF 2

Herriot consulting
civil & structural engineers

1/154 Fullarton Road Rose Park SA 5067
P: 08 8431 4555 E: admin@herriot.com.au W: herriot.com.au

PUBLISHED 17.07.2018