

# Home & Land Package

**\$299,904**



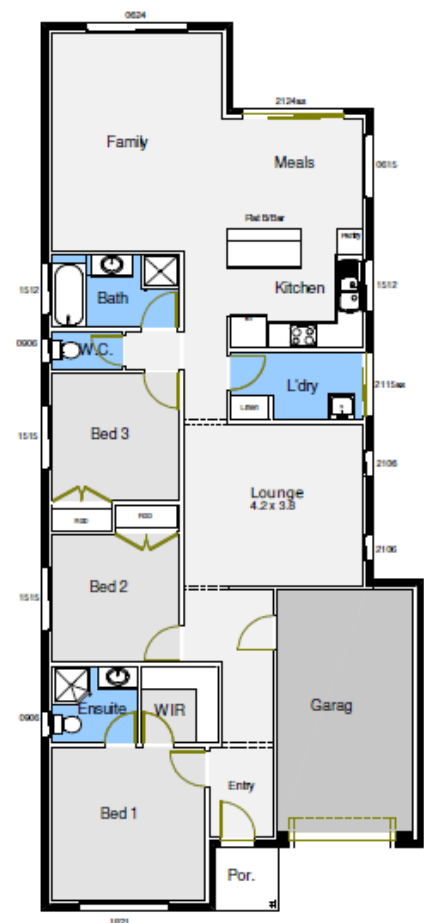
Elevation for Illustration Purposes Only

**Lot 5 New Road**

**Angle Vale**

- ◆ Façade with Rendered Piers
- ◆ S/Garage with Auto R/Door
- ◆ Alfresco Option Available
- ◆ 3 Bedrooms all with Robes
- ◆ 2 Living Areas
- ◆ 2 Bathrooms
- ◆ Overhead Cupboards
- ◆ Island Bar
- ◆ Retractable Range Hood
- ◆ Stainless Steel Appliances
- ◆ Ceramic Basins & WC Cisterns
- ◆ Pivot Shower Screen Doors
- ◆ R4.0 Ceiling Insulation to Living & Garage Areas
- ◆ R2.0 Insulation to External Walls
- ◆ Termite Resistant H2 Timber Frame
- ◆ Generous Footing Allowance included

**Land Size 313m<sup>2</sup>**



**Andy Parker**

**0411 283 001**

Land C/- Century 21 Special Projects RLA 2140

**DISTINCTIVE  
HOMES**

\* NOTE: Fees and Taxes associated with land purchase not included in price above. Bid Lic. G10420 ACN: 008 016 902

Prices Subject to Change Without Notification 04/02/2014. Elevation for Illustration Purposes Only.