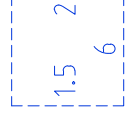
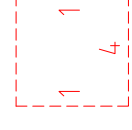


LEGEND



SINGLE STOREY SETBACK
 MAXIMUM BUILDING ENVELOPE &
 SETBACK DISTANCES FROM BOUNDARY.
 NOTE: COUNCIL PLANNING SETBACK
 REQUIREMENTS ARE TO BE READ IN
 CONJUNCTION WITH SHOWN DIMENSIONS.

TWO STOREY SETBACK
 MAXIMUM BUILDING ENVELOPE &
 SETBACK DISTANCES FROM BOUNDARY.
 NOTE: COUNCIL PLANNING SETBACK
 REQUIREMENTS ARE TO BE READ IN
 CONJUNCTION WITH SHOWN DIMENSIONS.

S ⊙ SEWER CONNECTION

W Δ WATER CONNECTION

E ⊙ SA POWER NETWORKS PILLAR /
ELECTRICAL CONNECTION

L ⊙ SA POWER NETWORKS LIGHT POLE

T/F SA POWER NETWORKS
TRANSFORMER LOCATION

SW ⊠ FRONT OF ALLOTMENT
STORMWATER CONNECTION

SW ^ STORMWATER KERB OUTLET

□ STORMWATER JUNCTION BOX

▢ STORMWATER SIDE ENTRY PIT

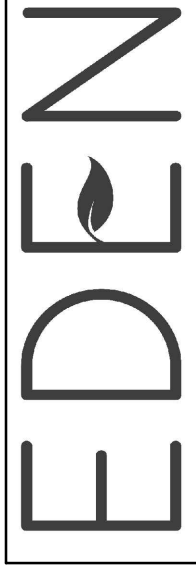
▵ PRAM RAMP

▨ FOOTPATH

□ COMMUNICATIONS PIT

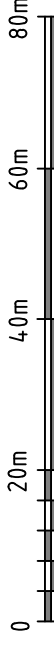
~ FENCING SUPPLIED

STAGE 2



NOTES

- THIS PLAN IS TO BE USED FOR MARKETING PURPOSES ONLY. EASEMENTS SHOWN ARE SUBJECT TO CHANGE AT THE DISCRETION OF STATUTORY AUTHORITIES AND/OR THE DEVELOPER.
- ALL DATA SHOWN HEREON IS SUBJECT TO APPROVAL BY THE REGISTRAR GENERAL'S DEPARTMENT, COUNCIL & RELATIVE SERVICE AUTHORITIES. ROAD LAYOUT AND ASSOCIATED INFRASTRUCTURE IS DERIVED FROM DESIGN INFORMATION AND SUBJECT TO CHANGE.
- ENVELOPES ARE INDICATIVE SHOWING MINIMUM SET BACKS ONLY AT THE TIME OF PREPARATION. COUNCIL AND DEVELOPMENT PLAN REQUIREMENTS MUST ALSO BE ADHERED TO.
- MINIMUM PRIVATE OPEN SPACE AND MAXIMUM SITE COVERAGE PER COUNCIL & DESIGN GUIDELINES APPLY.



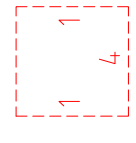
SCALE 1:1000

SHEET 1 OF 2

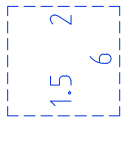
Herriot consulting
 civil & structural engineers

1/154 Fullarton Road Rose Park SA 5067
 P: 08 8431 4555 E: admin@herriot.com.au W: herriot.com.au
 PUBLISHED 22.08.2017

LEGEND



SINGLE STOREY SETBACK
 MAXIMUM BUILDING ENVELOPE &
 SETBACK DISTANCES FROM BOUNDARY.
 NOTE: COUNCIL PLANNING SETBACK
 REQUIREMENTS ARE TO BE READ IN
 CONJUNCTION WITH SHOWN DIMENSIONS.



TWO STOREY SETBACK
 MAXIMUM BUILDING ENVELOPE &
 SETBACK DISTANCES FROM BOUNDARY.
 NOTE: COUNCIL PLANNING SETBACK
 REQUIREMENTS ARE TO BE READ IN
 CONJUNCTION WITH SHOWN DIMENSIONS.

S ⊙ SEWER CONNECTION

W Δ WATER CONNECTION

E ⊙ SA POWER NETWORKS PILLAR /
 ELECTRICAL CONNECTION

L ⊙ SA POWER NETWORKS LIGHT POLE

T/F SA POWER NETWORKS
 TRANSFORMER LOCATION

SW ⊠ FRONT OF ALLOTMENT
 STORMWATER CONNECTION

SW ^ STORMWATER KERB OUTLET

□ STORMWATER JUNCTION BOX

▢ STORMWATER SIDE ENTRY PIT

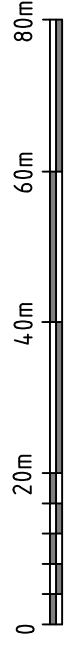
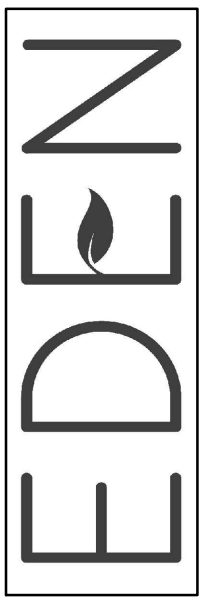
▵ PRAM RAMP

▨ FOOTPATH

□ COMMUNICATIONS PIT

~ FENCING SUPPLIED

STAGE 2



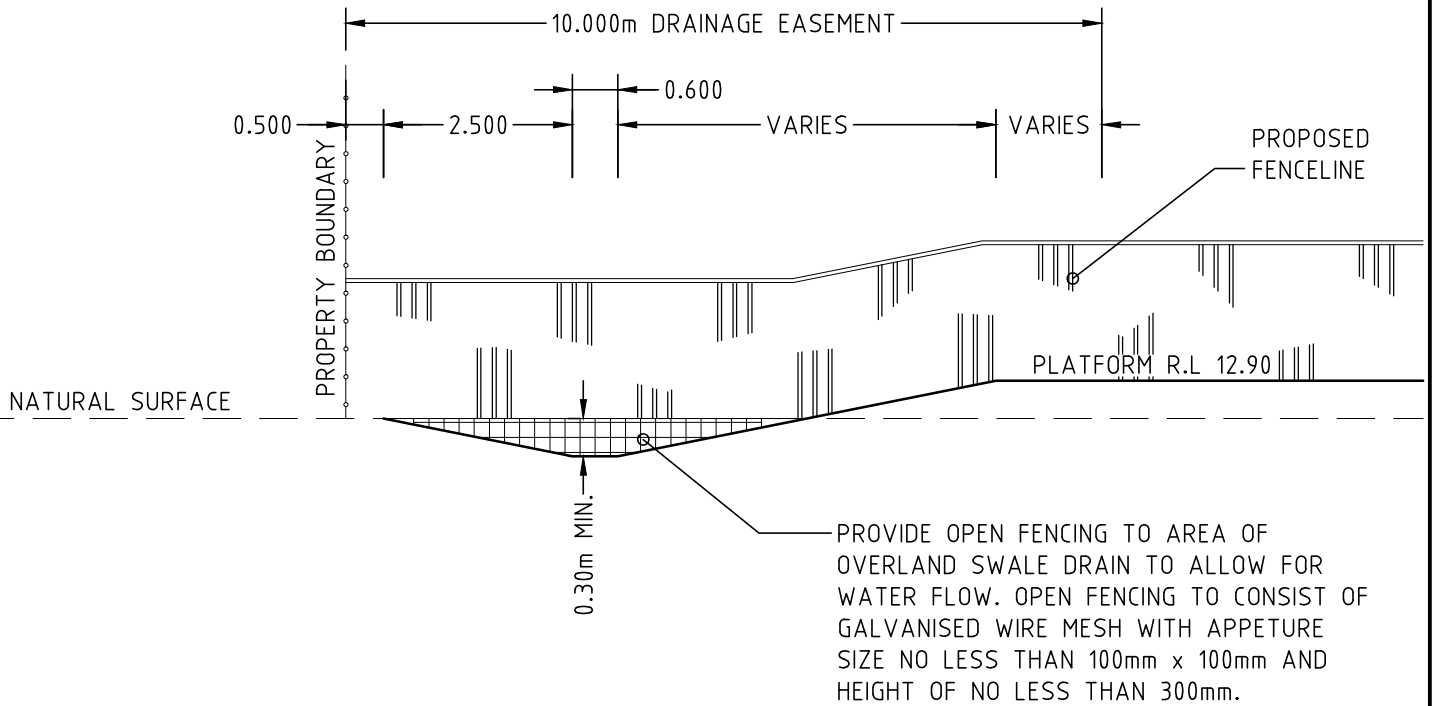
SCALE 1:1000
 SHEET 2 OF 2

NOTES

- THIS PLAN IS TO BE USED FOR MARKETING PURPOSES ONLY. EASEMENTS SHOWN ARE SUBJECT TO CHANGE AT THE DISCRETION OF STATUTORY AUTHORITIES AND/OR THE DEVELOPER.
- ALL DATA SHOWN HEREON IS SUBJECT TO APPROVAL BY THE REGISTRAR GENERAL'S DEPARTMENT, COUNCIL & RELATIVE SERVICE AUTHORITIES. ROAD LAYOUT AND ASSOCIATED INFRASTRUCTURE IS DERIVED FROM DESIGN INFORMATION AND SUBJECT TO CHANGE.
- ENVELOPES ARE INDICATIVE SHOWING MINIMUM SET BACKS ONLY AT THE TIME OF PREPARATION. COUNCIL AND DEVELOPMENT PLAN REQUIREMENTS MUST ALSO BE ADHERED TO.
- MINIMUM PRIVATE OPEN SPACE AND MAXIMUM SITE COVERAGE PER COUNCIL & DESIGN GUIDELINES APPLY.

Herriot consulting
 civil & structural engineers

1/154 Fullarton Road Rose Park SA 5067
 P: 08 8431 4555 E: admin@herriot.com.au W: herriot.com.au
 PUBLISHED 22.08.2017

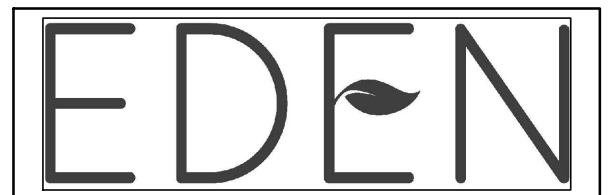


EASTERN SWALE TYPICAL SECTION

SIMILAR FOR ALL REGISTERED DRAINAGE SWALES WHERE FENCE CROSSINGS OCCUR

SCALE 1:100

STAGE 2



Herriot consulting
civil & structural engineers

NOTES

- THIS DOCUMENT IS TO BE USED FOR MARKETING PURPOSES ONLY. EASEMENTS SHOWN ARE SUBJECT TO CHANGE AT THE DISCRETION OF STATUTORY AUTHORITIES AND/OR THE DEVELOPER.
- ALL DATA SHOWN HEREON IS SUBJECT TO APPROVAL BY THE REGISTRAR GENERAL'S DEPARTMENT, COUNCIL.

1/154 Fullarton Road Rose Park SA 5067
P: 08 8431 4555 E: admin@herriot.com.au W: herriot.com.au