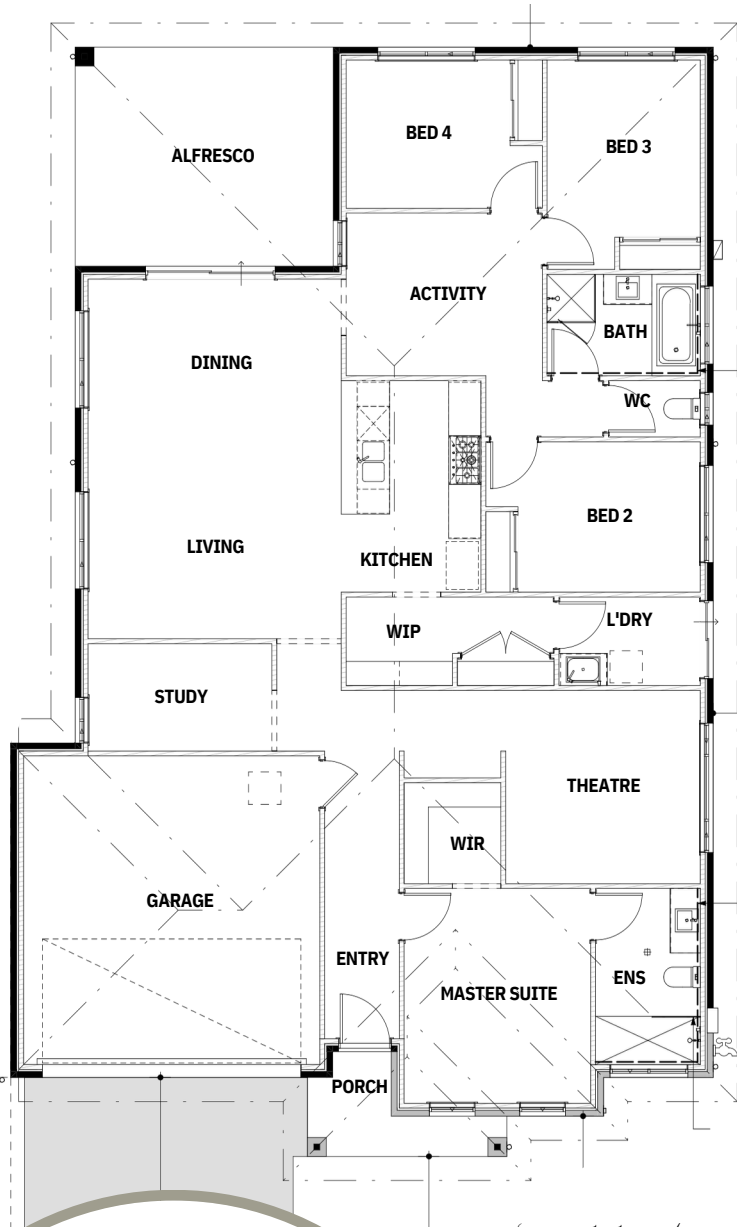


# Home & Land Package



 429m<sup>2</sup>

 242m<sup>2</sup>



'Baddie' (14m)

 4    2    3    2

Lot 108 Sage Court, Mount Barker

**\$807,000**

Titled land

## INCLUSIONS

- Driveway
- Solar panels
- Air Conditioning with zones
- 2700mm Ceiling height
- 30 LED downlights
- Site cost, stormwater & BAL
- Large Floor Tiles or Laminate flooring to Main Living
- Carpet with underlay to bedrooms
- Roller blinds & flyscreens
- Zero silica stone-look benchtop to Kitchen, Ensuite & Bathroom
- Overhead cupb'ds, integrated rangehood and undermount sink to Kitchen
- Duel 600mm or single 900mm oven(s)
- Choice of chrome, brushed nickel and black tapware
- Option to customise floor plans (no 're-design fee')

## PLUS


- Smart tech personalised portal throughout the build & preconstruction
- 3D renders and early-on access to our selection library
- Free interior design consult
- Supervisor access and personal phone number
- Real-time milestones
- Personal phone numbers (yep, even the bosses'!)
- Peace of mind coverage: HIA contract, home indemnity insurance.

Lee Sinclair

0404 479 440

lee@lavidahomes.com.au

 lee\_elli\_newhomeconsultants

 lee.elli.newhomeconsultants

 leeandelli.squarespace.com

 lavidahomes.com.au

Lee & Elli  
NEW HOME CONSULTANTS

Suite 16 | 15 Fullarton Road, Kent Town SA 5067

Terms and conditions apply. Visit [lavidahomes.com.au/terms-and-conditions](http://lavidahomes.com.au/terms-and-conditions)